

100 BASIN STREET
BRISTOL, PA

DETAILED FLOOR PLANS •



ROOMINDERS • REAL ESTATE MARKETING

APPROXIMATE
SQUARE FEET

p 856.429.4233

web - www.roominders.com

f 856.429.8118

3,252

e jon@roominders.com

measured by Jon Hitchner 8.15.18

Revised -

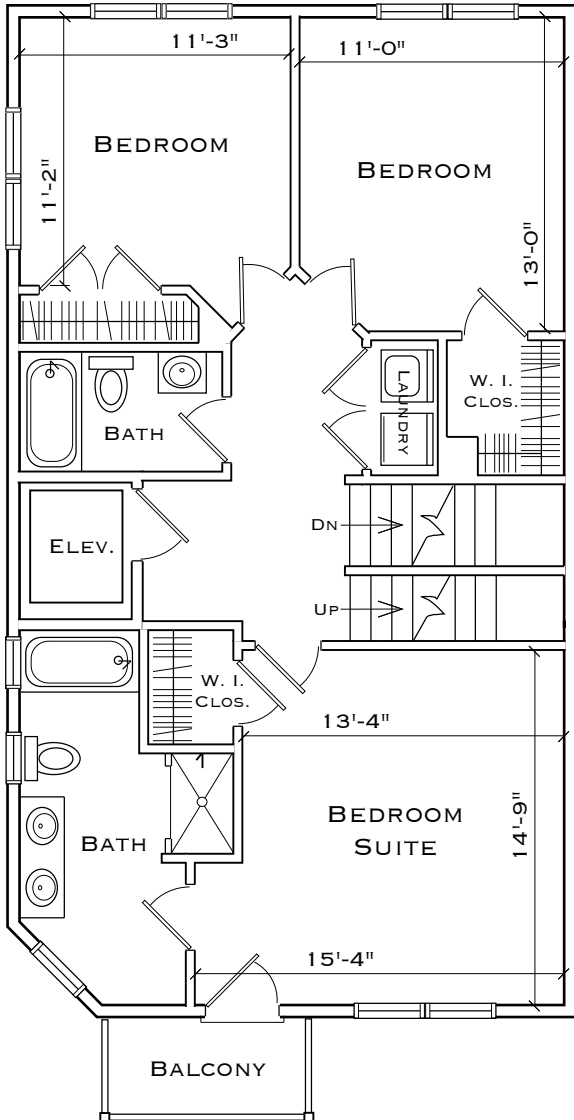
* Actual measurements may vary

* Not to be used for construction purposes

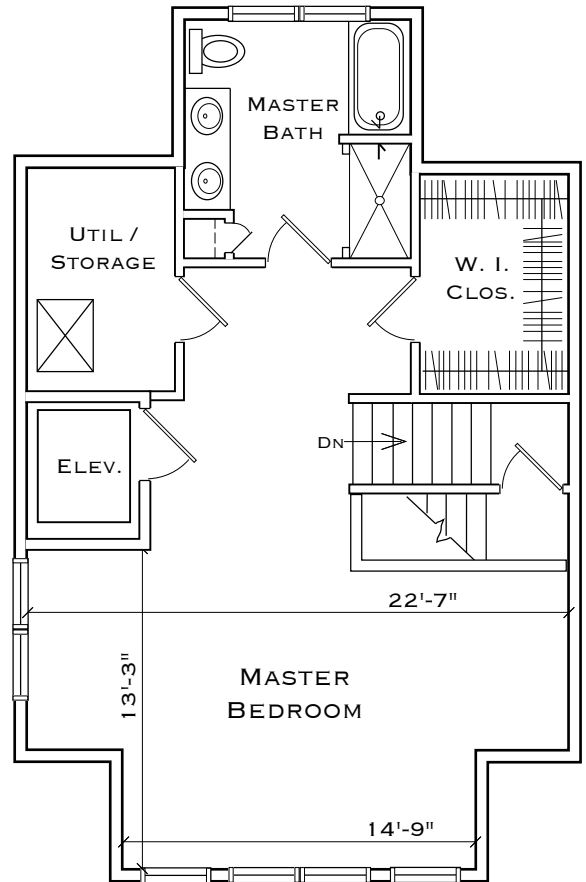
* Position of walls and fixtures are approximate

* Only to be used with written permission

(GARAGE ADD.
466 SQ. FT.)



SECOND FLOOR
992 SQ. FT.



THIRD FLOOR
737 SQ. FT.